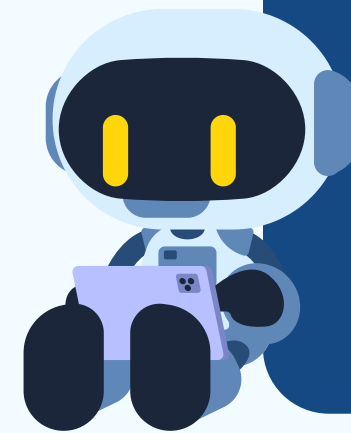


GUIDELINES FOR USING ARTIFICIAL INTELLIGENCE AT NTSDE

[NTSDE Ai policy is linked here](#)



1

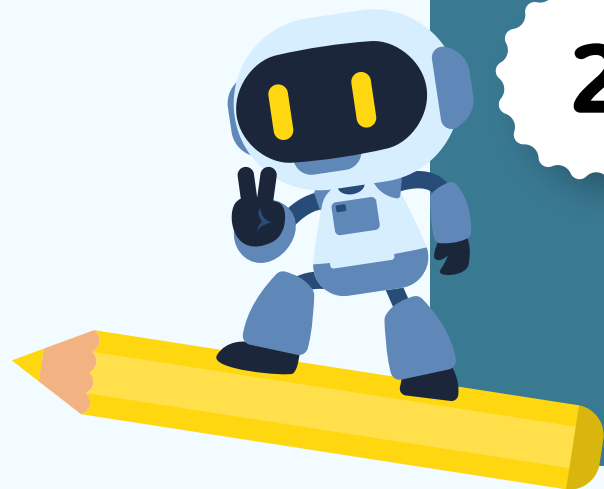
THINK FOR YOURSELF

AI can be helpful, but it's not always right. If you are allowed to use it, make sure you check its work and think for yourself.

KEEP YOUR WORK YOUR OWN

2

AI can support your learning, but we want your final work to show YOUR ideas and understanding. That's what's most important.



3

BE HONEST ABOUT USING AI

If AI helped you, say so. Just add a reference or note to show how you used it. See NTSDE Assessment Referencing Guide.

4

USE AI TO ENHANCE LEARNING

AI is a tool to help you learn, not replace your thinking. Use it to explore ideas and understand concepts.



5

PROTECT YOUR PRIVACY

Keep your personal information safe. Don't share details like your name, photos, passwords, or school logins with AI tools.

6

BE RESPONSIBLE

Use AI in a way that is fair and respectful. Avoid using it to cheat, copy work, spread false information, or harm others.

7

ASK FOR HELP

If you're unsure about using AI, just ask your teacher. We're here to help you use it in the best way.

